

# Pro-Clad 2 brick slip cladding

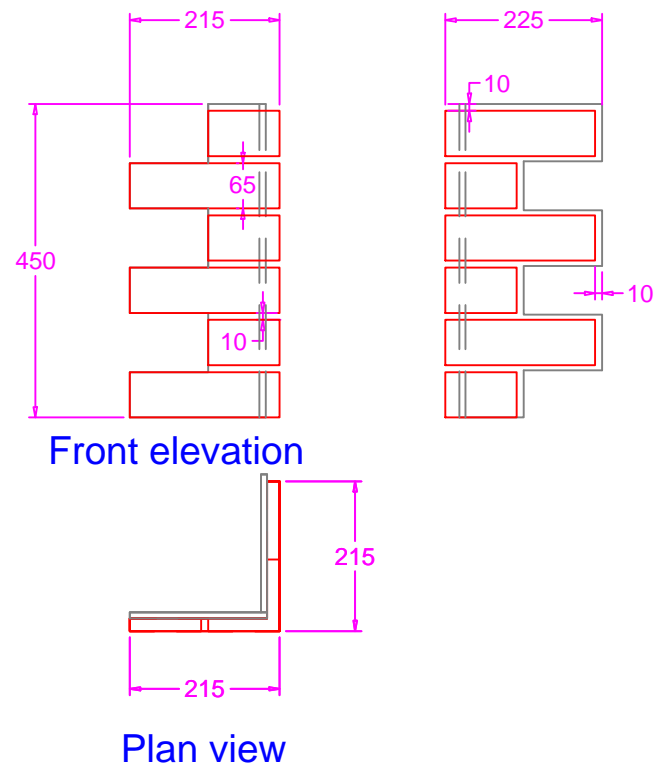
Standard Pro-Clad 2 90 degree corners and Jamb details  
 Brick type: 215 x 65 x slip thickness

NOTE

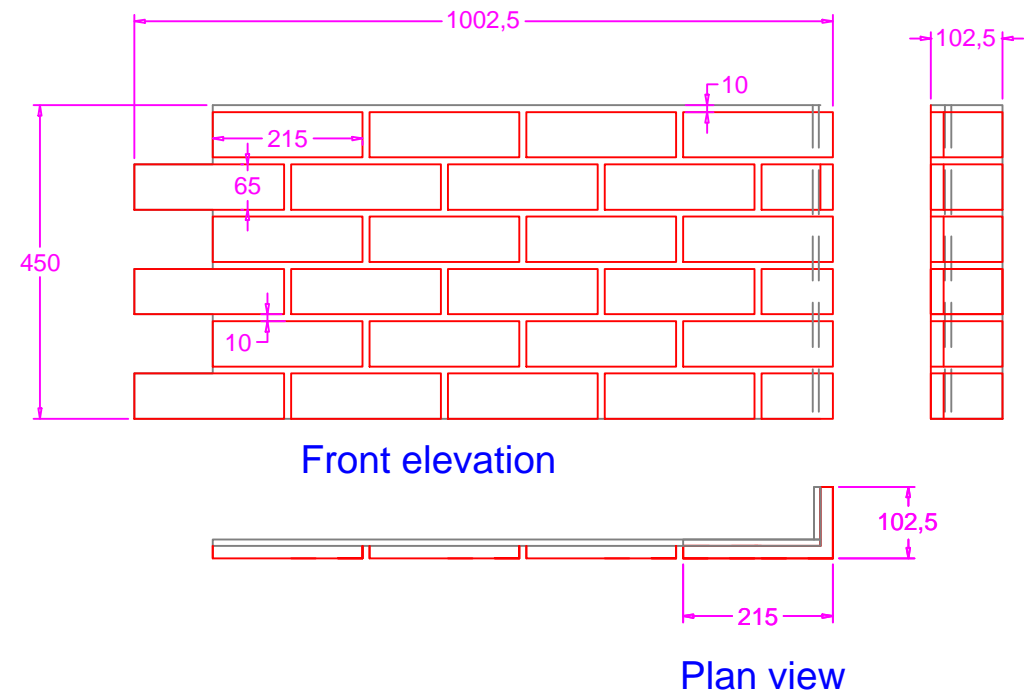
DISCLAIMER. FAB-CLADDING LIMITED ACCEPT NO LIABILITY WITH RESPECT TO DRAWING ACCURACY OR QUANTITIES SHOWN. ALL DRAWINGS SHOULD BE APPROVED BY THE PROJECT PROFESSIONALS BEFORE PLACING ANY ORDER. CONTENTS OF THIS DRAWING REMAINS THE PROPERTY OF FAB-CLADDING LIMITED AND NO REPRODUCTION WITHOUT WRITTEN PERMISSION IS ALLOWED.

NOTES  
 1. DO NOT SCALE FROM THIS DRAWING

External 90 degree corner detail



Window Jamb Detail + Standard Panel



Notes:  
 Lightweight Brick slip cladding panels.  
 Standard Pro-Clad boards 450mm high x 1125mm long x 25-30mm thick depending on brick choice.  
 Pro-Clad 1 boards can be faced in any brick type or stone (Natural or Recon) as well as a wide range of purpose made brick tiles available.  
 Panel sizes can be varied to suit the dimensions of the area to be clad.  
 'Stitch' bricks to be supplied loose for positioning after Pro-Clad 1 boards installed. Soffit panels to be Pro-clad 2 interlocking panels  
 Weight of standard panels 10-17Kg per panel (depending on choice of brick slip).  
 Further advice regarding installation, handling and fixings available on request.

REV	REV DATE	PURPOSE OF REVISION
-	-	-

**fab-Cladding**  
LIMITED

Unit MD2, Skelmanthorpe Business Park, Saville Road,  
 Skelmanthorpe, Huddersfield, HD8 9ED  
 Tel: 01484 865572 Fax: 01484 868834  
 Email: chris@fab-cladding.co.uk www.fab-cladding.co.uk

Client  
 .....

Project  
 .....

Drawing Title  
**Standard Pro-Clad 2 components**

Status **FOR APPROVAL**

Scale As Noted at A1 DO NOT SCALE

Date 27.01.2014

Dwg NO ProClad 2-0002 Rev -

This drawing is not to be used in whole or part other than for the intended purpose and project as defined on this drawing.