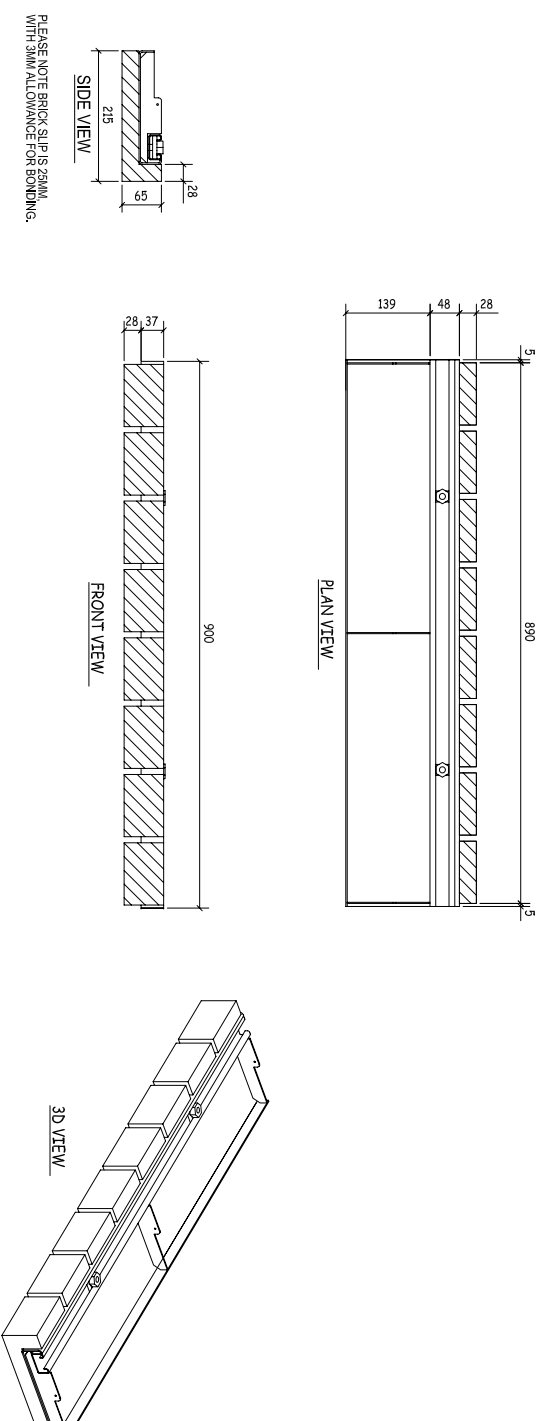


Options for bolt up brick faced steel backed units to be fixed to underside of masonry support units (supplied by others).

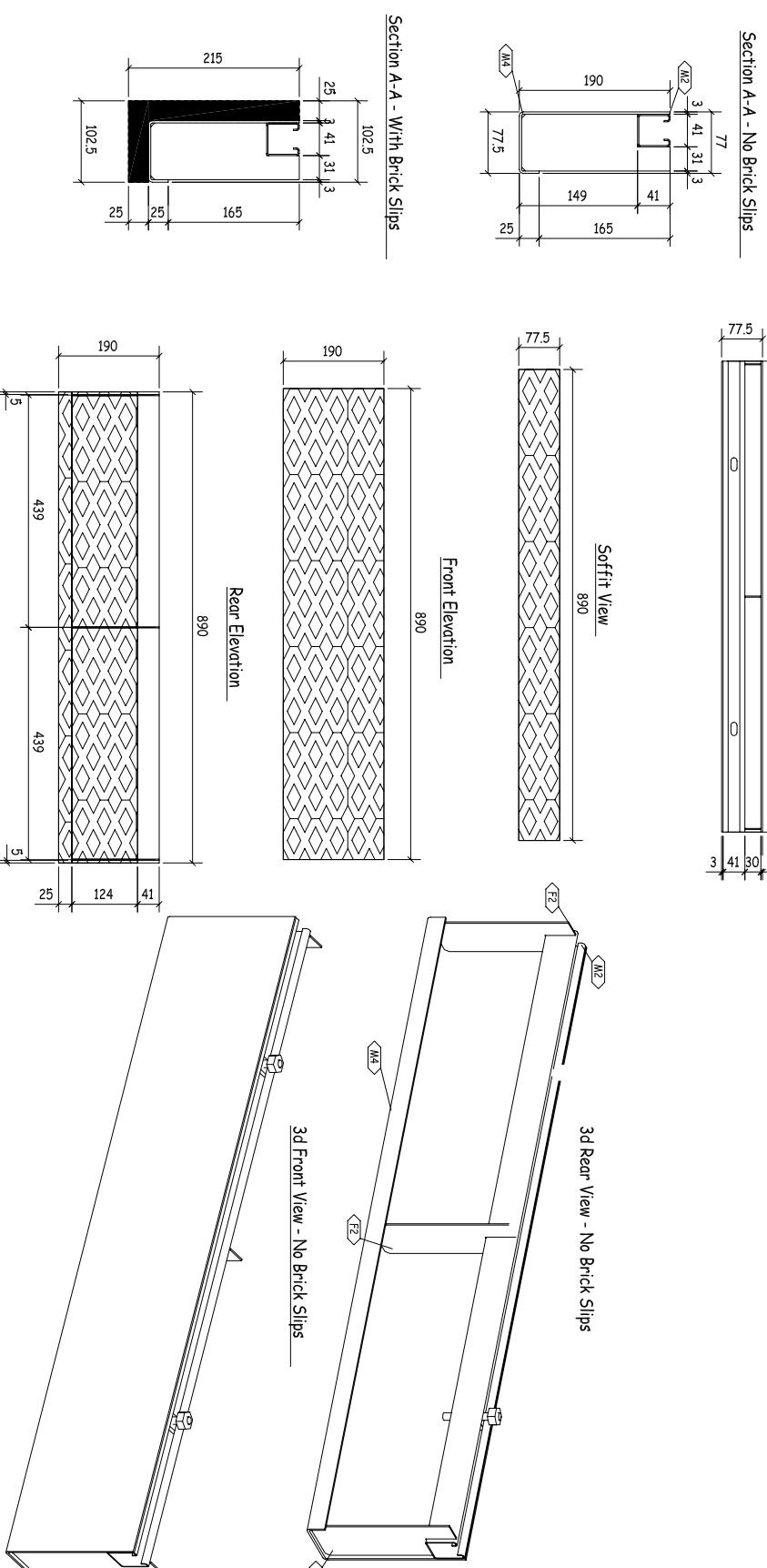
Header course 65mm high on face, 215mm faced soffit



NOTE



Soldier course 215mm high on face, 102mm faced soffit



DISCLAIMER: FAB-LITE BUILDING SOLUTIONS LIMITED ACCEPTS NO LIABILITY WITH RESPECT TO DRAWING ACCURACY OR QUANTITIES SHOWN. ALL DRAWINGS SHOULD BE APPROVED BY THE PROJECT PROFESSIONALS BEFORE PLACING ANY ORDER.

NOTES

1. DO NOT SCALE FROM THIS DRAWING

Other bond patterns, face and soffit dimensions available on request.

REV	REV DATE	PURPOSE OF REVISION



Client
Project
Drawing Title	Typical masonry support bolt up options
Status	FOR COMMENT
Scale	As Noted at A1
Date	22.11.13
Dwg NO	FBMS0001
Rev	-
This drawing is not to be used in whole or part other than for the intended purpose and project as defined on this drawing.	